



Introduction of OEM division

CONTEG

RETEX

A CONTEG GROUP COMPANY

ABOUT THE COMPANY

- Established 1998
- Privately held
- Headquarters: Prague, Czech Republic



500+ employees



Three manufacturing sites,
Czech Republic – 35.750 m2



SPANISH DIVISION

- Established 1960
- Privately held
- Headquarters: Barcelona, Spain



20+ employees



One manufacturing site,
Barcelona– 2.000 m²

E2E PROCESS IN-HOUSE

Design

- Construction development
- 2D/3D drawing
- Simulation
- Price calculation



Material management

- Tender management
- Material purchase
- Warehouse stock-keeping

Semi-finished good

Manufacturing

- Sheet metal processing
- Painting
- Assembly (manual)
- Integration (wire assembly, PCB integration)
- Testing, Measurement

Whole product good

Logistic

- Packing
- Stocking (KANBAN, VMI)
- Export
- Transportation



MAIN SKILL/COMPETENCY

Automated
storage system



High volume
metal sheet processing



Automated production
Robotic powder coating line



SPECIAL SKILLS/COMPETENCY

Simple

Metal sheet



Flat parts



Parcel box



Cooling



Fan



Cooling unit



Electrical engineer work



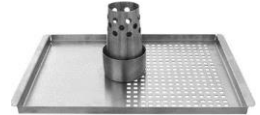
Switchboard



Cabinet



Stainless steel processing



Shelf



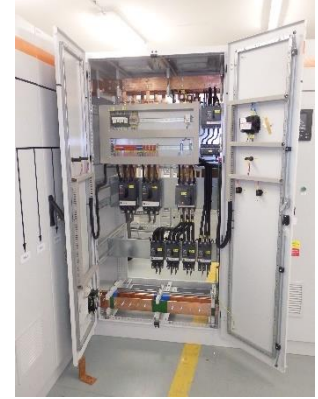
Display case



Complex

VALUE ADDED APPLICATIONS (ATICO)

- Fully assembled cabinets incl. cabling
- Electrical installations
- Container solutions
- Revision / testing
- Process control systems
- Datacenters
- Visualization
- Service



REFERENCES

ALSTOM

Casablanca
INFORMAČNÍ A KOMUNIKAČNÍ TECHNOLOGIE

COMMSCOPE®

DELL

ČESKÁ
SPORITELNA

EW
EUROWAG

Honeywel

hp
invent

ICZ



Nexans

O₂

SAMSUNG

SIEMENS

Schneider
Electric

SAP

TESCO

TNT

THE
DUBAI
MALL



We are here to exceed your expectations

www.conteg.com

alfigueras@retex.es

CONTEG

RETEX

A CONTEG GROUP COMPANY